

October 2011

The Chamber @WORK

Doing what most people think just happens!

306 N. Main, McPherson, Kansas 67460 • Phone: 620-241-3303 • www.mcphersonchamber.org • Visit us on Facebook

Welcome to the Chamber!

MCPHERSON COUNTY FOOD BANK, INC.
707 N. Main McPherson, KS 67460
Contact: Courtney Rlerson, Mark Heldebrecht
Phone: 620/241-8050
The McPherson County Food Bank began in 1983 when St. Joseph's Catholic Church gave food boxes to several needy families. They determined help was needed by many more and not just during the holidays. Churches, civic organizations, clubs and individuals banded together to establish the current Food Bank. Clients are limited to six visits in six months, special circumstances will be considered on a case by case basis.
Hours: Tuesdays 10:00 a.m. to 12:45 p.m.
Fridays 2:00 to 4:45 p.m.

GILMORE SOLUTIONS, INC.
113 S. Broadway Avenue Sterling, KS 67579
Contact: Julie Gellerman, Josh Gilmore, Steve Rivas
Phone: 620/278-3600, 1-800-380-2491
Web: www.gilmoresolutions.com
Gilmore Solutions is a provider of technology consulting, support and project management services for clients in the Central U.S. Serving as the IT department for companies without technology staff, they specialize in developing strategy and delivering business-focused solutions that provide demonstrated ROI. From traditional on-premise systems to the latest in cloud-based solutions, they know they have the expertise and business acumen to help improve your business.
Located in Sterling, Gilmore Solutions has been helping clients streamline their businesses through intelligent use of technology for nearly 10 years. Their recent selection as a member of HTG Peer Groups, a network of 250 of the industry's most respected IT service companies, is evidence that Gilmore Solutions is among the most innovative IT solution providers in the U.S.
For more information visit www.gilmoresolutions.com, or contact Gilmore Solutions at 866-978-3600 or info@gilmoresolutions.com

BROOKLYN & CO.
213 N. Main McPherson, KS 67460
Contact: Brooke Harper, Brenda Ebeling
Phone: 620/241-1177
Fax: 620/241-1157
On Facebook, so keep up to date on what is happening at Brooklyn & Co. a women & children's boutique. This is the second location to open, they currently have a store in Bulher, but the McPherson store is approximately 3 times larger. They have been in business 7 years. Brooklyn & Co will be carrying women's & children's clothing, shoes, purses, jewelry, home décor and gift items. Brooke Harper will be managing the mother/daughter family business with local personnel that will be working to assist customers. They hope to add sparkle to the downtown and welcome input to suggestions in inventory that McPherson needs.

ADVANCED SATELLITES
111 East Kansas McPherson, KS 67460
Contact: Erin Mettlen, Todd Borden
Phone: 620/241-3474
Web: www.advancedsatandtv.com
Founded in 2003 by owner Todd Borden, Advanced Satellites has grown from being a one man business in a small store in Hays, to a thriving business that serves 2 locations in Hays & McPherson. "Service with integrity" is their mission statement. When you come in to Advanced Satellites, their highly trained staff will answer any questions you have about switching to DirecTV or Dish Network. They will make sure to find you the best package to suit the entire family. With packages starting at just \$29.99, they know they can give you the best deal. Come by Advanced Satellites, and see what savings they can pass on to you.

2011-2012 Chamber Goals

Education & Workforce

- Provide professional development programs and seminars that will promote growth for members and their employees
- Enhance skill level of the workforce and awareness of career opportunities to retain and recruit young talent by establishing a Work Force committee
- Continue to support the community Leadership McPherson program that develops effective leaders for the future of McPherson
- Support the BASIC Committee (Building Assets Successfully In Children) in promoting the developmental assets and youth programming
- Support mentoring programs and initiatives that introduce students to business/industry
- Promote recruiting from local colleges to provide workforce needs
- Utilize partnership opportunities with local educational institutions

Business and Membership Development

- Utilize the Chamber website as a tool for member marketing opportunities
- Welcome new businesses and introduce them to the Chamber of the benefits of membership
- Host "Chamber 101" orientations twice a year
- Implement programs and activities that will benefit in the growth and promotion of member products and services
- Market and promote the McPherson County Entrepreneurship Loan Program throughout the county to encourage start-up, entrepreneurial development, retention and expansion for businesses through partnerships with

Network Kansas, SCKEDD (South Central Kansas Economic Development Division), SCORE (Service Corp of Retire Executives), USDA Rural Development, McPherson County Small Business Development, Kansas Small Business Development Center and others

- Continue to work with Main Street, MIDC (McPherson Industrial Development Corp.), McPherson Convention & Visitors Bureau, City and County regarding local policy's that maximize business opportunities
- Utilize the services of the McPherson County Small Business Development Co. and the Kansas Small Business Development Center in providing services needed for business counseling and assistance.

Community Development

- Provide forums to develop an informed electorate
- Continue to work with agencies, organizations to provide workforce housing
- Promote planning and investing for the growth of McPherson
- Continue to support the GoMcPherson marketing and recruitment plan to increase opportunities for young adults and support initiatives that aim to connect and retain young families in the McPherson area
- Support YP Mac and their initiative that strives to achieve a strong community relationship through socials, volunteering and networking opportunities; building a strong foundation for 21-40ish young people in McPherson county.

Ongoing

- Continue to take an active role on issues that affect business and

economy and be considered a partner with other community organizations; business recruitment and identify marketing strategies that will benefit all areas of economic development

Thank You Retiring Board Members

The Chamber Board of Directors consists of 12 members that serve and represent various business sectors of the community. Each of the directors serve a 3 year term, that is staggered among the 12 directors, therefore 4 new board members are appointed each year to fill the positions of the 4 retiring board members. Board members completing their terms are Jeff Smith, S & S Farms, Heather Meredith, Hospira, Charlotte Calhoun, Four Season Realtors and Jason Hoover, Midway Motors. I have valued each board member and what they have contributed to the Chamber organization. Jason Hoover, serving as President, demonstrated the importance of extending the invitation to your employees to be involved, his youth also reminded me of how old I really am; Charlotte Calhoun has experience with serving on boards, she is a true servant of the McPherson community; Heather Meredith asked questions and challenged the who, what & why – keeping us all focused; Jeff Smith, full of energy, always positive attitude and a patient listening board. Thank you all for giving of your time.

Jennifer Burch
Executive Director

McPherson College Initiates Discount Program for Students

More than 60 area businesses have signed on to become a "McPherson College Partner" and offer a 10% discount to students at McPherson College says Kathy Nicholson, coordinator of the program. Participating businesses will display a placard that states they are "Proud to be a Partner of McPherson College" and all the MC student have to do is show the participating merchants their college id. In addition, each McPherson College student has been given a McPherson College vanity plate for their vehicle. Students displaying their vanity plate will be eligible for a monthly \$50.00 gift certificate just for being spotted shopping in McPherson and displaying their MC vanity plate.

Thank you to the following Chamber member businesses for supporting this program. A complete list is available at www.mcpherson.edu/students/shopmac.php

Enjoy shopping, dining and discovering McPherson!

These Chamber member businesses offer a 10% discount:

A5 Western, Aaron's, Artshirt Gear for Sport, Becker Tire of McPherson, Brown's Shoe Fit, The Cooke Nook, Creative Hairlines Salon & Spa, Guy's N Gals, Health Food Market, Hometown Tire & Turf, Hopp's Sound & Electric, Imperial Garden Express, Integrity Salon, Jantz Lumber, Java Johns, Krehbiels Meat Market & Deli, Mattress Haven, McPherson Floral, Mike's TV & Furniture, Montana Mikes, Penzoil, Perkins Family Restaurant, Pet Express, Quiznos, Renberger Jewelers, Sassy Bags, Sherwin-Williams Co., Stewart Sports and Awards, The Bookshelf/The Hidden Closet, The Cake Lady, The Well, Venable Jewelers, Woodies BBQ Shack, Clayworks, Brooklyn & Co.

These Chamber member businesses do not offer a 10% discount, but offer the following: McPherson Business Solutions, 10% off Computer Services Cooper Tire of McPherson, Free Alignment and Balance

Free & Confidential One-on-One Business Counseling Available

The Kansas Small Business Development Center will have an Outreach Center Consultant here every 8th Monday of the month (9/19, 10/17, 11/11, 12/19, 2012 dates will be published later) at the McPherson Chamber of Commerce, 306 N. Main. The KSBDCC offers individual, confidential, and comprehensive business consulting at no charge to its clients. Any existing small business or individual interested in starting a business is encouraged to make an appointment or meet experts in areas of marketing and sales, accounting, financial analysis and cost control, personnel, inventory control, business start-up or acquisition, business liquidation or sale, strategic planning, and many other areas. One hour long appointments are available, beginning at 9:00, 10:00, 1:00, 3:00 and 4:00 and can be made by calling Mack Buckley at 680/474-6100.

BUSINESS WORKSHOPS

Tuesday, September 27

6:00 P.M. TO 8:30 P.M.

"The 3Ms Money, Marketing and Management" – Learn about financing your business, tools for marketing, and what is all involved in the operation of your business. \$25.00 per person. Call the Chamber at 241-3303 to reserve your spot – space is limited.

Thursday, October 13

6:00 P.M. TO 8:30 P.M.

"How To Write A Business Plan" – all businesses successes start with a plan. Learn how to put the best business practices to use in writing a business plan for your business. Call the Chamber at 241-3303 to reserve your spot – space is limited.

From Our Family ... To Yours
Your Confidence Is Our Reputation
GLIDDEN-EDIGER FUNERAL HOME
222 West Euclid, McPherson, KS
Phone (620) 241-2550 24 hr. Service • gliddenedigerfuneral.com
Troy & Rhonda Glidden • Ed & Jeanne Ediger

Screen Printing & Embroidery
Quality Work & Great Prices!
Caps • Jackets • T-Shirts
Sweatshirts • Teamwear & More!
Check out our great selections of Spirit Apparel.
Best wishes to all our teams!
211 N. Main, McPherson • 109 N. Main, Lindsborg
620-241-4101 • 1-800-221-7413 • 785-227-2055

The global leader in plumbing, heating and pipe joining systems.
1-800-976-9819
2211 Viega Ave.
McPherson, KS 67460
www.viega.com

SWINDOLL
JANZEN
HAWK &
LOYD, LLC
Certified Public Accountants
123 South Main
P.O. Box 1337
McPherson, KS 67460
(620) 241-1826 office
888-241-1826 toll free
(620) 241-6926 fax
www.sjhl.com
AUDITING • TAX SERVICES • CONSULTING SERVICES • PAYROLL

2011 - 2012 Chamber of Commerce Board of Directors

(effective 10/1/11)

President- Greg McCullough, Farmers Alliance Mutual Insurance • President Elect – Dell Reese, Dirt Cheap Banners
 Past President – Chad Alexander, Peoples Bank & Trust • Treasurer – Jodi Baerg, Adams, Brown, Beran & Ball, Chtd
 Directors: Rob Monical, McPherson Hospital, Jim Leach, retired, Michael King, King Enterprise Group, Ron Willems, Sunflower Bank,
 Anna Ruxlow, McPherson College, Penny Selzer, Farmers State Bank, Troy Short, Hospira, Corey Hoover, Midway Motors

Mission: to work as an organization of individuals, businesses and professionals to enhance the economic, civic and cultural interests of the McPherson area.

Chamber events Sept./Oct. 2011

September	12:00 BAM! @ Chamber office	13	9:30 a.m. Chamber Coffee hosted by McPherson Co. Food Bank
21	4:00 p.m. Ribbon Cutting & Dedication for the Genesis House, 9165 Clubhouse Drive (Open House 3:00 - 5:00)	29	9:30 a.m. Chamber Coffee hosted by Pine Village @ Chamber office
	4:00 p.m. Women's Event Committee @ Chamber	October	
22	9:30 a.m. Chamber Coffee hosted by Swindoll, Janzen, Hawk & Loyd, 123 S. Main. Celebrating 75 years!	3	11:00 a.m. GoMcPherson Workforce @ American Maplan
	11:30 a.m. Chamber Board of Directors @ Chamber	4	12:00 Ambassadors @ Chamber
	5:30 p.m. YPMAC Social at Home State Bank, 223 N. Main	5	7:00 a.m. WPP @ Perkins
27	5:00 p.m. Ribbon Cutting Time Out Sports Bar & Grill	6	9:30 a.m. Chamber Coffee hosted by First Bank Kansas
	6:00 p.m. 3 M's of Business Workshop – Management, Marketing & Money	7	7:00 a.m. Deadline for McPherson County Women of Distinction nomination
28	10:00 a.m. Ribbon Cutting for Ear Care Hearing Aid Center, 320 S. Main, new location!	11	7:00 a.m. Ag committee @ Perkins
			12:00 BASIC @ McPherson Middle School Community Development
			4:00 Social @ Time Out Sports Bar Grill

You Are Invited! Chamber Business After Hours, Expo & Annual Meeting

The McPherson Chamber of Commerce invites you the Chamber Expo Business After Hours Annual Meeting scheduled for Thursday, October 20, 2011 at the Holiday Manor Convention Center.

It all begins at 5:30 p.m. with the Business EXPO & After Hours where Chamber members can enjoy the hors d'oeuvres and cash bar while networking with other Chamber members who have exhibit table. This is a great opportunity to showcase your business, products & service, while mingling with other Chamber members. The evening will also include the recognition of the 2011 President's Award and annual meeting business. The evening will conclude at 7:30 p.m.

Admission
 \$15.00 per person
 Includes Business Expo, Networking, Hors d'Oeuvres

Showcase Your Business with a Spotlight Table
 \$35.00 includes 1 admission, 8'x30" display table
 Cash Bar available

To reserve your exhibit table or make reservation(s) contact the Chamber at 241-3303 or stop by the office at 306 N. Main by October 17th.

This Month's DQ Winner

Congratulations everyone at Integrity Salon & Spa, 108 N. Main – winners of the DQ treat drawing. Thank you Roger & Karen for providing this totally awesome treat for members of the McPherson Chamber of Commerce.



SUNFLOWER BANK

2620-241-1220 • 120 W. Kansas • McPherson
www.sunflowerbank.com



PRAIRIELAND PARTNERS

JOHN DEERE

620-241-3553
 800-364-4020

1411 S. Hwy. 81 Bypass
 McPherson, KS 67460

McPherson Main Street Report:



Ann Engel
 Main Street
 Executive Director

In the past year we have had businesses expand, new businesses open, buildings and businesses sold, and new products and faces in our Downtown. Each time something new appears, it takes the excitement and the anticipation of "that incoming wave" to push forward, and the determination to get back up when that "wave" knocks you down. I believe that success is the result of

being able to maintain that resilience to the setbacks while hanging on to the excitement of what could come next. We are so fortunate that McPherson has an abundance of these successful people who have committed to making McPherson and our Downtown the beautiful place it has become.

Speaking of our Downtown, each time I travel to another city, I find myself drawn to the Downtown areas and I mentally compare the architectural details of the buildings, the variety of stores, and the design elements of the areas to our Main Street. Okay, I'll admit that I am prejudiced, but our Downtown and McPherson as a whole, are equal, and offer superior to many. Yes, we will always have room for improvement, and we still need to add some products and services, but I am very optimistic that we will continue to grow and improve. McPherson is a great place to live and I can honestly say, "there's no place like home!"

That being said, I am on vacation, and Sawyer is waiting for "me" to help him find that special seashell while we wait for the next wave!

Ann Engel
 Director

From The United Way



Brenda Sales
 Director

United Way officially kicked off our 2011 Campaign with our annual luncheon on August 30th. We were very fortunate to have three local members of our community speak – telling "their story" about how local organizations are making an impact in their lives. Taylor Bruce told about how the McPherson Family YMCA's 2nd Grade Learn to Swim program gave her confidence to feel safe in the water and the skills to begin to learn to swim.

Elizabeth Newby, along with Terry and Kathy Hardman, shared how they have become friends through STEPMC. Elizabeth is a single parent, who is going to college and working. Terry and Kathy support Elizabeth through friendship, tutoring and just helping her by knowing they are there to be her friend.

Stephen Weller shared his story about being a Big Brother through Big Brothers Big Sisters. Stephen and "Teddy" have become fast friends, playing games and doing homework together. Teddy has even developed and illustrated his own comic book!

United Way of McPherson County works with and supports programs that have a lasting impact on critical health and human service needs by serving

local children and youth, people with disabilities, the elderly and families in crisis. Some of the programs

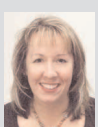
- Work with children to better prepare them to succeed through mentoring programs, life skills training and quality child care.
- Ensure seniors are living life to their fullest with home delivered or congregate meals, transportation, and intergenerational activities.
- Providing low cost medical and dental services for the low income or uninsured.
- Assist families in getting back on their feet following a financial crisis or abusive situation.
- § Help people become emotionally stable with individual or family counseling and training.

Our theme this year is "Be a hero...make a difference." A hero is somebody who is selfless, who is generous in spirit, who just tries to give back as much as possible and help people. A hero is someone who really deeply cares. A hero is a man who does what he can.

If you would like to make a donation to our 2011 United Way Campaign and help support programs that help so many in McPherson County, please send your check to P.O. Box 55, McPherson. Or you can drop it by our office at 306 N. Main, McPherson.

Brenda Sales, Director
 Director

From Convention & Visitors Bureau



Anne Hassler
 Director
 Convention & Visitors Bureau

What's your event McPherson? We recently completed our 3rd annual "What's Your McPherson?" photo contest and I've started laying out our 2012 calendar that we produce with the McPherson Sentinel. Our winning entry was a photo of Carl Kasey in the All Schools Day parade in his uniform, flag waving behind him and a big smile on his face. I think the smile has much to do with the fact his granddaughter took the photo and I know how much Carl adores his family and also think the fact it's All Schools Day helped put that smile on Carl's face.

As a relatively new transplant to McPherson, I've noticed the community really gets behind the ASD activities. I've also been involved in one way or another with the McPherson Scottish Festival since I moved here. I think it's one of the best darn festivals I've ever been to. Sadly we only got one photo of the festival entered

in our contest this year. For some reason it hasn't garnered the same community support as ASD, which is a shame.

As I write this, we are just a few days away from our first Basketball Tradition Celebration. I have no idea whether the community will latch on and support the idea of an annual basketball celebration. The sport itself seems pretty popular in McPherson. Our sponsors have been incredibly supportive. The Globe Refiners story, at least from this writer's viewpoint, has all the elements of an amazing story. Maybe it will ignite the interests of a few more people in the area.

No matter what the occasion, I hope the community supports the many events put on in McPherson. I appreciate the many organizations that put out the time and effort to stage the events. It's easy to see events are good for bringing visitors to town, good for generating sales tax revenue and good for the people who live here.

To stay informed of upcoming events, go to www.facebook.com/vistmtac.

Anne Hassler
 Director



Our Community Banks On Us

Peoples Bank and Trust
 Member FDIC



HASSMAN Termite & Pest Control Inc.

• Termites • Roaches • Spiders • Silverfish
 • Ants • Clover Mites • Fleas

Over 44 Years of Quality Service by the Hassman Family

Call 241-5260

www.hassmantermite.com

Member of Kansas & National Pest Control Associations

Sentricon
 Colony Elimination System

Member of:  




Computer Solutions, Inc.

Your Full Service Technology Partner
 100 Combined Years of Experience
 121 W. Marlin Suite 100

THE WARREN PLACE BUILDING
 McPherson, KS • 620-245-1142 • www.csiks.net

Nancy Laprad
 Account Manager
nlaprad@csiks.net



National Cooperative Refinery Association

www.ncra.coop

2000 S. Main 620-241-2340



HOME STATE BANK & TRUST
 MEMBER FDIC

McPherson, KS 67460
www.hsbt.com

Main Bank
 223 N. Main

North Bank
 1300 N. Main

East Bank
 104 S. Centennial

Auto Bank
 Maple & Euclid